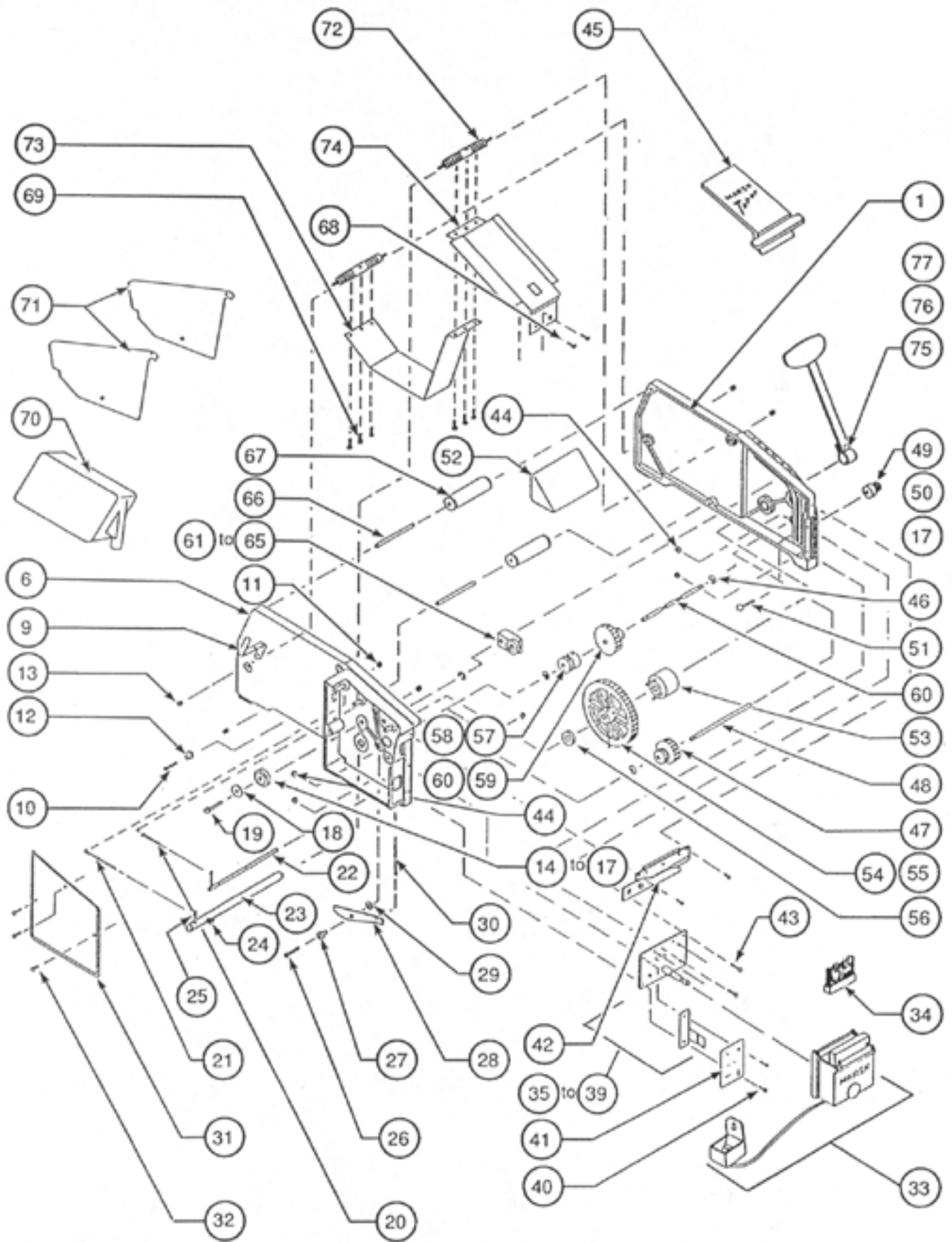


**FIGURE 4 RP5037
BRUSH TANK PLATE
WITH HEATER, ASSEMBLY**

Index No.	Part Number	Description	Index No.	Part Number	Description
1	RP5037	Plate Assembly, Brush Tank 115V	10	RP1802B	Screw (#8-32 x 3/8" Phil. Pan Hd. Sem., With Ext. Tooth Lockwasher) (5)
2	RP5035	Plate & Support Assembly	11	RP1710D	Lockwasher (#8 Int Tooth) (5)
3	RP1392	On / Off Switch With Light (115 V. A. C.)	12	RP1710A	Thermostat Nut (5)
4	RP1807	Heater (115 V. A. C.)	13	RP4265C	Connector (5)
5	RP1808	Thermostat With Terminal Screws	14	RP4265D	1/4" Heat Shrinkable Tubing, 1" Lg. (5)
6	RP1710C	Washer (3/8" O. D. x .170" I. D. x .040") (5)	15	RP5121	Supply Cord (115 V. A. C.) With Terminals
7	RP5114	Insulator Board	16	RP1206	Cable Clamp (5)
8	RP5034	Thermostat Shield	17	RP06C-SHQ	Screw (#10-32 x 1/2" Phil. Pan Hd.) (5)
9	RP1710B	Screw (#8-32 x 1 1/8" Phil. Tr. Hd., Cad. Pl.) (5)	18	RP5033	Name Plate

For metric models (with heater) use the parts shown above with these exceptions;

Index No.	Part No.	Description
3	RPE/1393	On / Off Switch With Light (220/240V)
4	RPE/5150	Heater (220/240V)
15	RPE/5121	Supply Cord Without Plug
Not Shown	RPE/4266	Label (220/240V) (5)



5HT HAND TAPER PARTS BREAKDOWN

(FIGURE 1)

Index No.	Part Number	Description	Index No.	Part Number	Description
1	RP5003PX	Right Side Plate Assembly	40	RP5057	Screw (#10-32 x 5/8 Phil. Pan Hd.) (5)
2	RPTC03B	Feed Shaft Bearing (2) (in assy. - not shown)	41	RP5032	Name Plate
3	RP5056	Main Shaft Bearing (5) (in assy. - not shown)	42	RP1602X	Cutter Assembly (see Figure 2)
4	RP5008	Rubber Pad (foot) (5) (in assy. - not shown)	43	RP1601A	Screw (#10-32 x 1/2, Phil. Filstr. Hd. Blk. Ox.) (5)
5	RP5005IN	Scale, Length, Inches (in assy. - not shown)	44	RP15N	Nut (#10-32, Hex. Jam.) (5)
6	RP5002PX	Left Side Plate Assembly	45	RP5023	Cover / Weight
7	RPTC03B	Feed Shaft Bearing (2) (in assy. - not shown)	46	RP1415R	Retaining Ring (5)
8	RP5076	Groove Pin (3/16 x 3/4) (5) (in assy. - not shown)	47	RP5060	Idler Gear
9	RP1909	Bottle Bracket	48	RP5061	Idler Gear Shaft (5)
10	RP06C-R	Screw (1/4-28 x 5/8, Phil.Pan Hd. Cad. Pl.) (5)	49	RP5013X	Stop Nut Assembly
11	RP1516	Nut (1/4-28 Hex) (5)	50	RP5013	Stop Nut
12	RP1912	Water Level Regulator Bushing (2)	51	RP5011	Carriage Bolt (1/4-20 x 1-1/4) (5)
13	RP51N	Nut (5/16-24, Hex Cad. Pl.) (5)	52	RP5024	Cast Weight
14	RP5090X	Stop Assembly	53	RP5063X	Roller Clutch Assembly
15	RP5090	Inner Bumper Ring	54	RP5065X	Main Drive Gear Assembly
16	RP5091	Outer Bumper Ring	55	RP5066	Clutch Return Spring (5)
17	RP5012	Stop Pad (2)	56	RP5067	Main Gear Spacer Washer (5)
18	RP5094	Washer (15/16 O. D. x 5/16 I. D. x 1/16)	57	RP5070X	Feed Shaft Gear Assembly
(5)			58	RP1110A	Setscrew (1/4-20 x 1/4, Soc. Hd. Cup-Pt. W/Nylok) (5)
19	RP1503B	Screw (5/16-24 x 1-1/4, Hex Hd., Cad. Pl.) (5)	59	RP5030X	Feed Wheel Assembly
20	RP5039	Pivot Shaft Spring (2)	60	RP5031	Feed Wheel Shaft
21	RP5100	Operating Lever Return Spring (5)	61	RP5025	Pressure Roller & Bracket Assembly
22	RP5043X	Pivot Shaft Assembly	62	RP5040	Pressure Roller
23	RP5046X	Main Shaft Assembly	63	RP5041	Pressure Roller Bracket (5)
24	RP5074	Screw, Cap Sock Hd. (5)	64	RP1101E	Setscrew (1/4-20 x 1/2, Sq.Hd. Cup-Pt.) (5)
25	RP5102X	Return Spring Slide Assembly	65	RP502	Roll Pin (5/16 x 11/16) (5)
26	RP5136	Screw (5/16-24 x 1-1/4, Phil. Pan Hd.) (5)	66	RP5016	Tape Roller Shaft
27	RP1606	Cutter Operating Link Bushing	67	RP5015X	Tape Roller Assembly
28	RP5072	Cutter Actuating Arm	68	RP1116D	Screw (8-32 x 1/4 Phil. Tr. Hd. Blk. Ox.) (5)
29	RP3125	Washer (.317 x 11/16 x .012 Phos. Bronze) (5)	69	RP1407A	Screw (8-32 x 3/8 Phil. Tr. Hd. "F" Thd. Cut., Cad. Pl.) (5)
30	RP5075	Cutter Return Spring (2)	70	RP1903P	Water Bottle
31	RP5027	Cover, Left Side Plate	71	RP1525	Spacer Plate
32	RP06C-SHQ	Screw (10/32 x 1/2, Phil. Pan Hd. Bl. Ox.) (5)	72	RP1401	Tie-Rod
33	RP1701XC	Brush Tank & Water System	73	RP5019	Tape Receptacle
34	RP1712	Brush	74	RP5047	Tape Channel
35	RP5020X	Brush Tank Plate Assembly	75	RP5095X	Operating Lever Assembly
36	RP5021	Tank Support	76	RP5099	Carriage Bolt (5/16-18 x 1, Bl. Ox.) (5)
37	RP1710A	Nut-Thermostat (5)	77	RP5045	Nut (5/16-18, Hex Cad. Pl) (5)
38	RP1802B	Screw (#8-32 x 3/8 Phil. Pan. Hd Sem. with Ext. Tooth Lockwasher) (5)			
39	RP04A	Screw (5/16-18 x 5/8 Hex Hd., Cad.Pl.) (5)			

FOR METRIC MODEL, SEE PAGE 3.
FOR HEATER MODEL 5HT-H, SEE PAGE 7.